

SERIES CM

MAGNETIC CONTACTS

Keeping an eye on your doors and windows

These are reed switches made out of two ferrous contacts. When approached by a magnetic field they close the circuit. Used to detect the status of the doors and windows, magnetic contacts are generally attached to access control systems like fire alarms and indicator lights.



The installation is straightforward: the reed switch is connected to the door or window frame and the magnet to the leaf.

Reed contact characteristics

- Max Voltage: 200 V DC
- Max. Current: 500 mA
- Max. Power 10 VA
- Initial resistance to contact $R = 0,1 \Omega$
- Isolation Resistance: $R = 10^{12} \Omega$
- Temperature -40°C / 125°C
- Mean time between failures (MTBF): 10^8

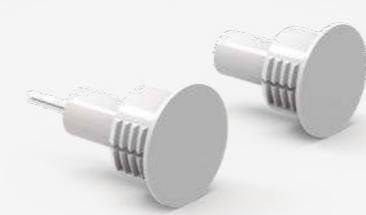
E
Embedded



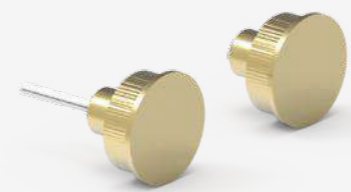
CMI002



CMI016



CMI122
Operating distance: 20 mm
10 mm (on iron surfaces)

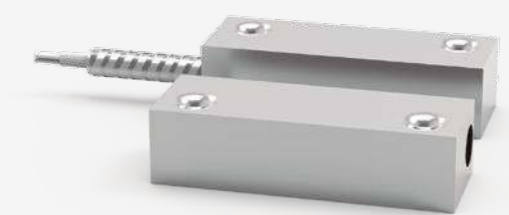


CMI130
Operating distance: 20 mm
10 mm (on iron surfaces)

S
Surface



CME045
Temperature: -10°C / 40°C



CMC005



CMB003



CMB020

	Material	Distance	Reed	Magnet	Grade 2	* Grade 3
E	CMI002	Brass	12 mm	29,5 x 7,5 Ø	27,5 x 7,5 Ø	Complies with EN50131 - 2 - 6 Grade 2 Class 4
	CMI016 *	ABS	15 mm	29,5 x 7,5 Ø	29 x 7,5 Ø	
	CMI122 *	ABS	20 / 10 mm	29 x 20 Ø	29 x 20 Ø	
	CMI130	Brass	20 / 10 mm	18 x 20 Ø	18 x 20 Ø	
S	CME045 *	Plastic (colors)	25 - 40 mm	56 x 16 x 5	56 x 16 x 5	Complies with Grade 3 on request: CMI016 CMI122 CME045 CMC005
	CMC005 *	Aluminium	25 / 18 mm	58 x 15 x 20	58 x 15 x 20	
	CMB003	Plastic with glass	25 / 18 mm	85 x 38 x 13	50 x 26 x 25	
	CMB020	Aluminium	35 / 30 mm	130 x 42 x 15	98 x 30 x 25	