

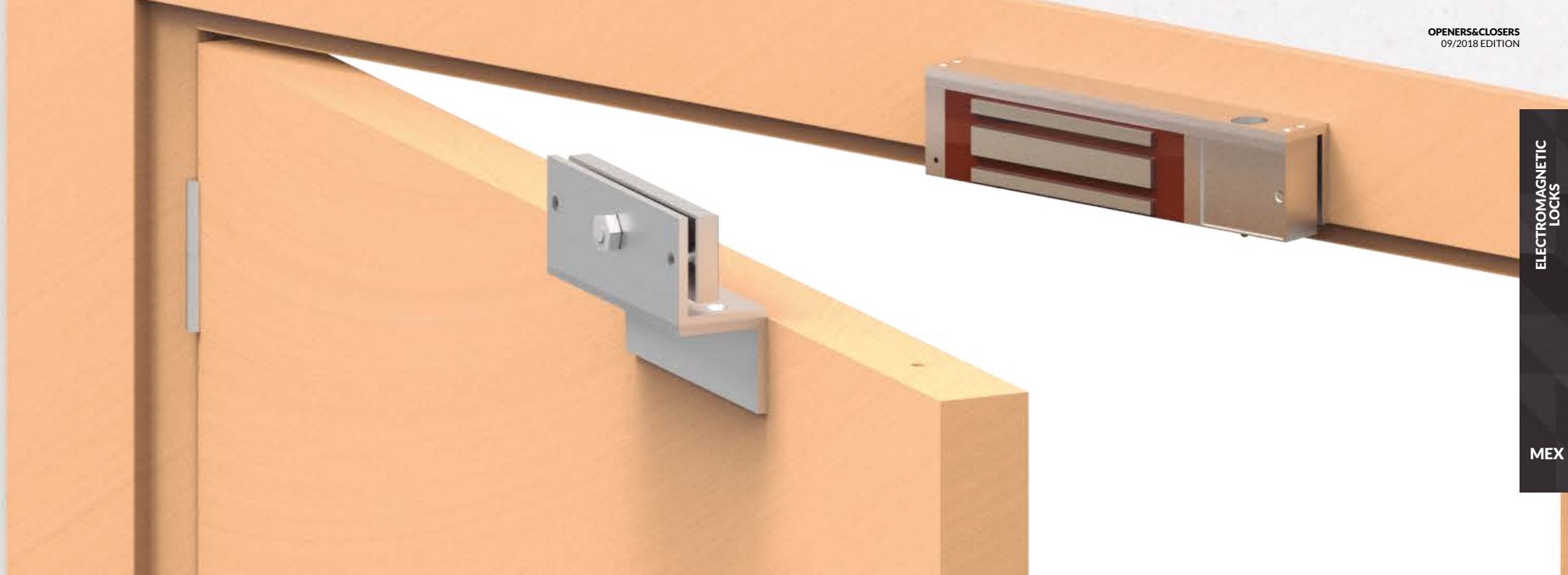
SERIES MEX

MAXIMUM RESISTANCE

High power and low consumption

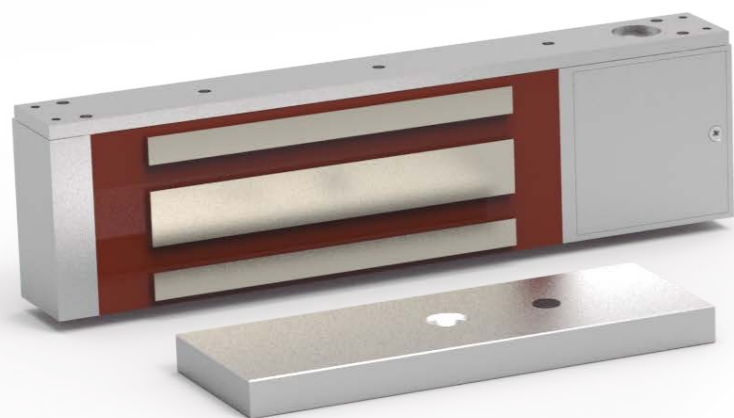
To satisfy all your needs, we have created a maglock that uses the least amount of power possible without losing any holding force. It comes with an integrated timer, and most models come with a standardized automatic voltage detection system (12-24V AC/DC)

Our vandal protection secures your maglock against external tampering. This ensures that the lock cannot be manipulated, removed or stolen.

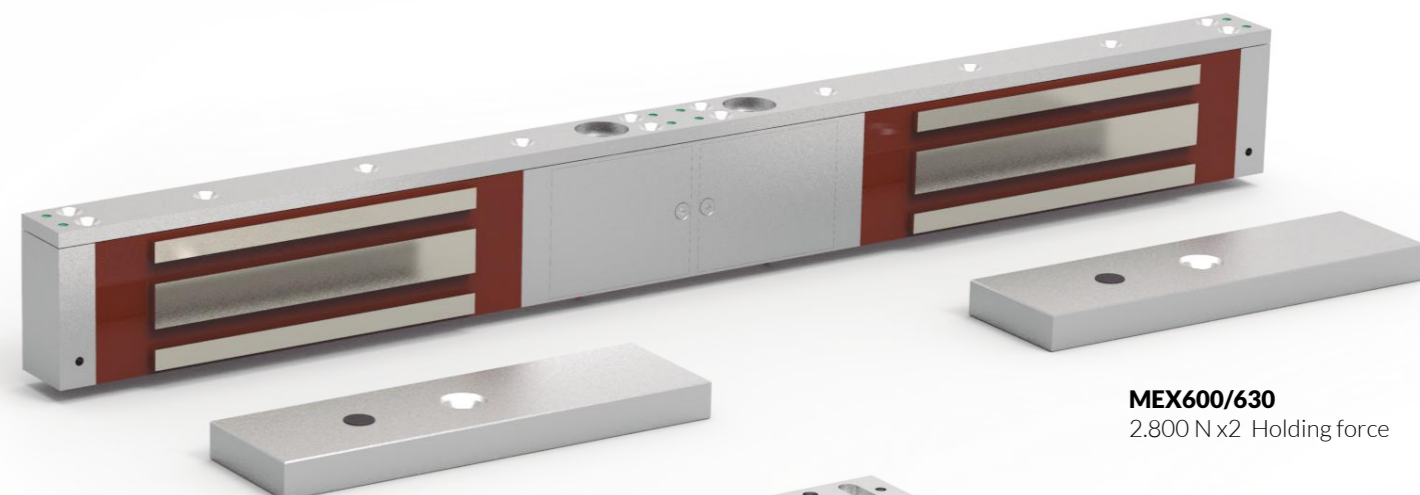


ELECTROMAGNETIC
LOCKS

MEX



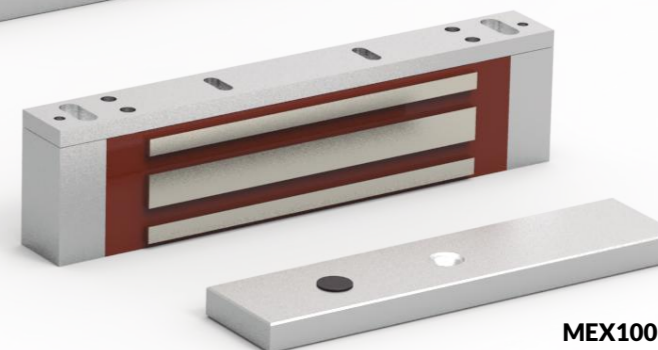
MEX500/530
5.000 N Holding force



MEX600/630
2.800 N x2 Holding force



MEX400/430
2.800 N Holding force



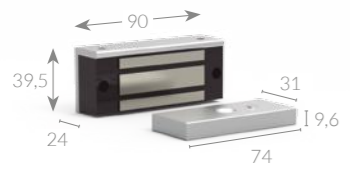
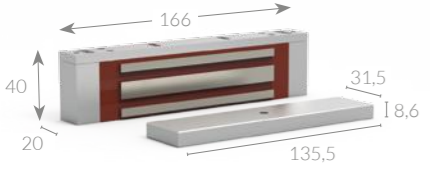
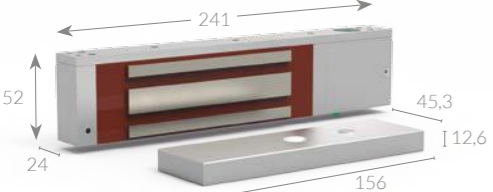
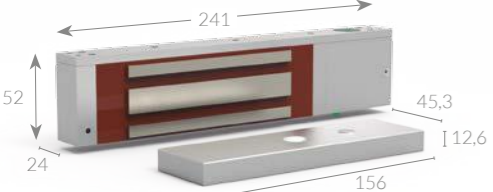
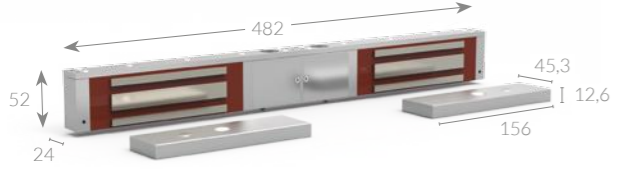
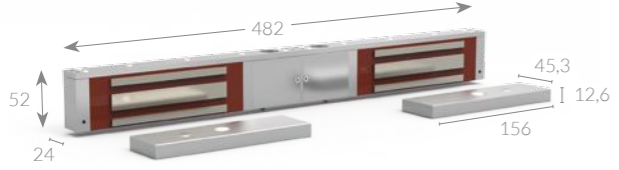
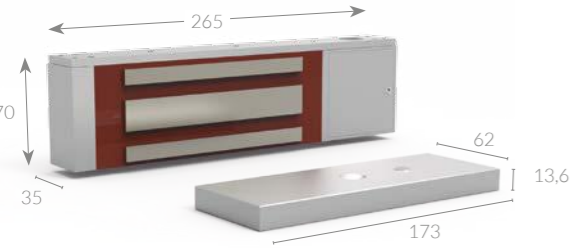
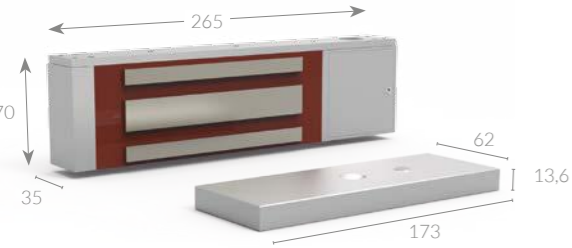
MEX100
1.800 N Holding force



MEX70
500 N Holding force

Our smallest and our strongest

Tiny MEX70 has been specially designed to keep your closets, drawers and showcases properly locked.

		Holding force	12 V DC	Multivoltage - Manual 12 / 24 VDC	Multivoltage - Automatic 12 - 24 VDC	Door status (Reed)	LED	Timer: 5, 10, 20 o 30 s (5 by default)	L Outward opening doors	Z Inward opening doors	U Glass doors	F Fire Doors
 <p>MEX70</p> <p>3,3 W / 0,5 Kg 12 V DC (300 mA) 24 V DC (150 mA)</p>	500 N	-	Yes	-	Yes	-	-		MEXZ1	MEXU1		
 <p>MEX100</p> <p>3 W / 1,2 Kg 12 V DC (250 mA)</p>	1.800 N	Yes	-	-	-	-	-	MEXL1	MEXZ2	MEXU2		
 <p>MEX400</p> <p>3,3 W / 2,25 Kg 12 V DC (270 mA) 24 V DC (180 mA)</p>	2.800 N	-	-	Yes	-	-	-	MEXL2	MEXZ3	MEXU3	MF1	
 <p>MEX430</p> <p>3,3 W / 2,25 Kg 12 V DC (270 mA) 24 V DC (180 mA)</p>	2.800 N	-	-	Yes	Yes	●●	5 s					
 <p>MEX600</p> <p>3,3 W / 4,4 Kg 12 V DC (270 mA x2) 24 V DC (180 mA x2)</p>	2.800 N x2	-	-	Yes	-	-	-	MEXL2 x2	MEXZ3 x2	MEXU3 x2	MF1 x2	*Remember to order 2 units
 <p>MEX630</p> <p>3,3 W / 4,4 Kg 12 V DC (270 mA x2) 24 V DC (180 mA x2)</p>	2.800 N x2	-	-	Yes	Yes	●●	5 s					
 <p>MEX500</p> <p>3,3 W / 4,1 Kg 12 V DC (270 mA) 24 V DC (180 mA)</p>	5.000 N	-	-	Yes	-	-	-	MEXL3	MEXZ4		MF1	
 <p>MEX530</p> <p>3,3 W / 4,1 Kg 12 V DC (270 mA) 24 V DC (180 mA)</p>	5.000 N	-	-	Yes	Yes	●●	5 s					