

SERIES ME

SLIM AND STRONG

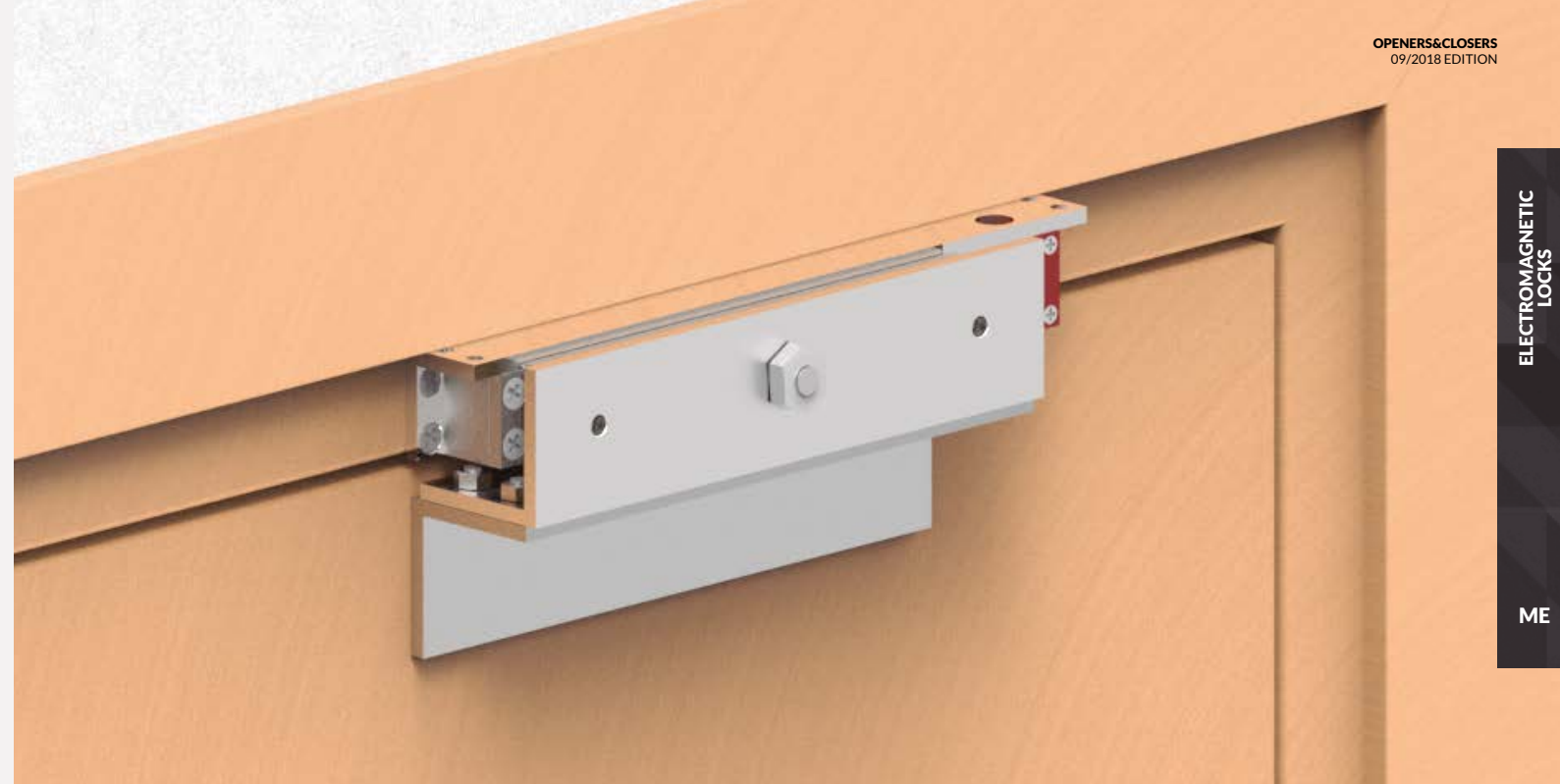
An elegant solution

We have developed the thinnest electromagnetic lock on the market. With only 30mm width it fits on the most sophisticated of your interior decoration without losing holding force.

Not only is the Series ME the smallest, it's also the most sensible to unwanted intruders, being able to detect the smallest tampering attempts.

We like details, for this reason, each unit comes certified with its real closing force and we have accomplished the lowest magnetic remanence.

30 mm

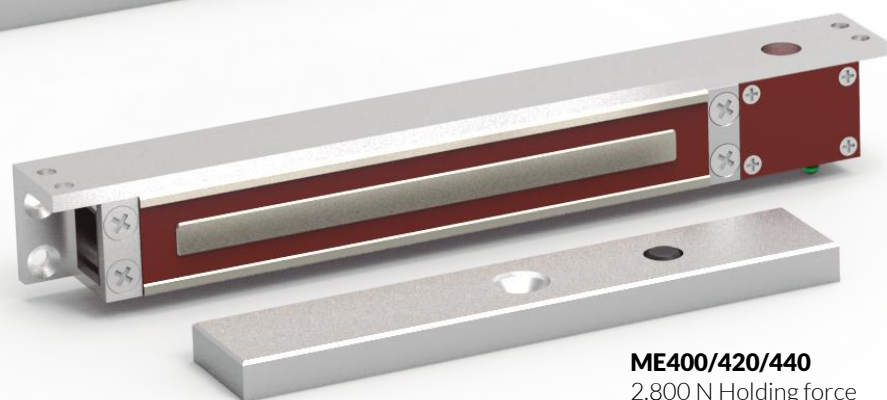


ELECTROMAGNETIC
LOCKS

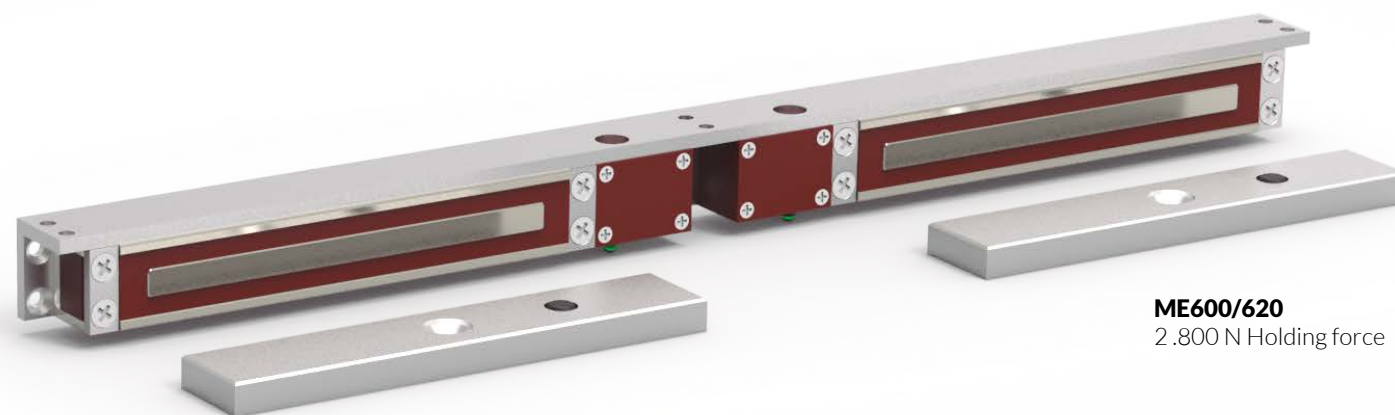
ME



ME500/510
WATERPROOF IP65
2.500 N Holding force



ME400/420/440
2.800 N Holding force



ME600/620
2.800 N Holding force



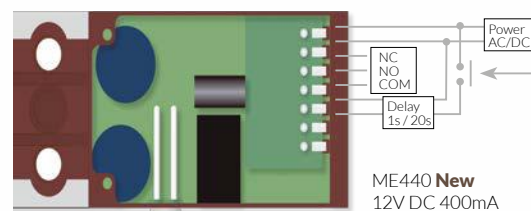
ME200/210
2.800 N Holding force
For wood installation

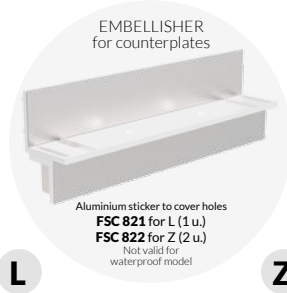
ME201/211
2.800 N Holding force
For metal installation

Counterplate mounting kit
included L and Z installation



ME440: the smart one. The maglock has been fitted with an electric circuit that allows it to activate a timer. Also this electromagnetic lock has an automatic voltage detection system on a broader voltage span (9-24V AC/DC).





L

Z

U

F

S

E

Outward opening doors Inward opening doors

Glass doors

Fire doors

Sliding doors

Embedded doors

Holding force
Manual voltage change
12 / 24 V DC
Automatic voltage change
9 - 24 V AC/DC
Embedded
Surface
Door Status (Reed)
LED
Timer:
1 to 20 s (6 by default)

Image	Model	Holding force	Manual voltage change	Automatic voltage change	Embedded	Surface	Door Status (Reed)	LED	Timer	Door Type				MES1	MEE1
										L	Z	U	F		
<p>6W / 1,55 kg 12 V DC (500 mA) 24 V DC (250 mA)</p>	ME200	2.800 N	Yes	-	Yes	-	-	-	-	-	-	-	-	-	-
	ME210	2.800 N	Yes	-	Yes	-	Yes	-	-	-	-	-	-	-	-
<p>6W / 1,55 kg 12 V DC (500 mA) 24 V DC (250 mA)</p>	ME201	2.800 N	Yes	-	Yes	-	-	-	-	-	-	-	-	-	-
	ME211	2.800 N	Yes	-	Yes	-	Yes	-	-	-	-	-	-	-	-
<p>6W / 1,74 kg 12 V DC (500 mA) 24 V DC (250 mA)</p>	ME400	2.800 N	Yes	-	-	Yes	-	-	-	-	-	-	-	-	-
	ME420	2.800 N	Yes	-	-	Yes	Yes	●●	-	-	-	-	-	-	-
	ME440	2.800 N	-	Yes	-	Yes	Yes	●●	6 s	-	-	-	-	-	-
<p>IP65 Waterproof 6W / 1,78 kg 12 V DC (500 mA) 24 V DC (250 mA)</p>	ME500	2.500 N	Yes	-	-	Yes	-	-	-	-	-	-	-	-	-
	ME510	2.500 N	Yes	-	-	Yes	Yes	-	-	-	-	-	-	-	-
<p>6W / 3,48 kg 12 V DC (500 mA x 2) 24 V DC (250 mA x 2)</p>	ME600	2.800 N x2	Yes	-	-	Yes	-	-	-	-	-	-	-	-	-
	ME620	2.800 N x2	Yes	-	-	Yes	Yes	●●	-	-	-	-	-	-	-



*Remember to order 2 units